



Thank You for inviting our firm

IMPEX ENGINEERS PVT. LTD.

A multi-disciplinary design firm that can cater to all
the project's design requirements.



We hereby take pleasure in introducing ourselves as an Architect and Civil Contractor under one Roof. We have been highly successful to progress from a modest beginning over 25 years ago, now to a capacity to handle multi crore construction, renovation and rehabilitation projects, both in and out of Mumbai.

Our primary considerations is to earn approval and appreciation from our valued Clients and Consultants for entrusting us with their prestigious projects timely our endeavor to earn goodwill of our clients and consultants even after completion of the Projects.

Our past 25 years of work exposure particularly in construction, renovation and rehabilitation have equipped us with advanced technical know how. Whether it is specialized structural repairs, water proofing, plumbing, painting or interior decoration, our excellence in execution of projects has been acknowledged and well appreciated.



House in Pune

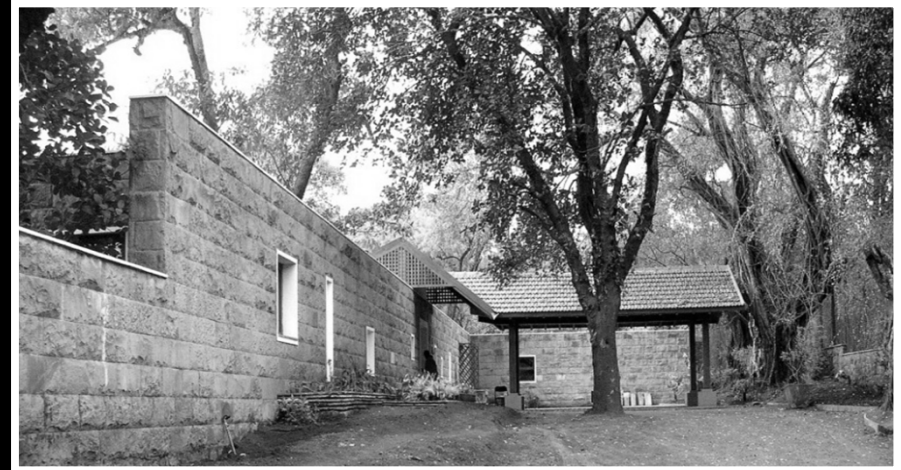


Two- Bay House , Alibaug



House in Awas, Alibaug

Our completed Design Portfolio



House in Lonavala



House in Bandra, Mumbai



ABISAI, Alibaug



HOUSE IN AWAS, ALIBAUG

HOUSE IN AWAS , ALIBAUG



External View



External View

HOUSE IN AWAS , ALIBAUG



Awas Courtyard



Awas Courtyard

HOUSE IN AWAS , ALIBAUG



Out-door Seating area

HOUSE IN AWAS , ALIBAUG

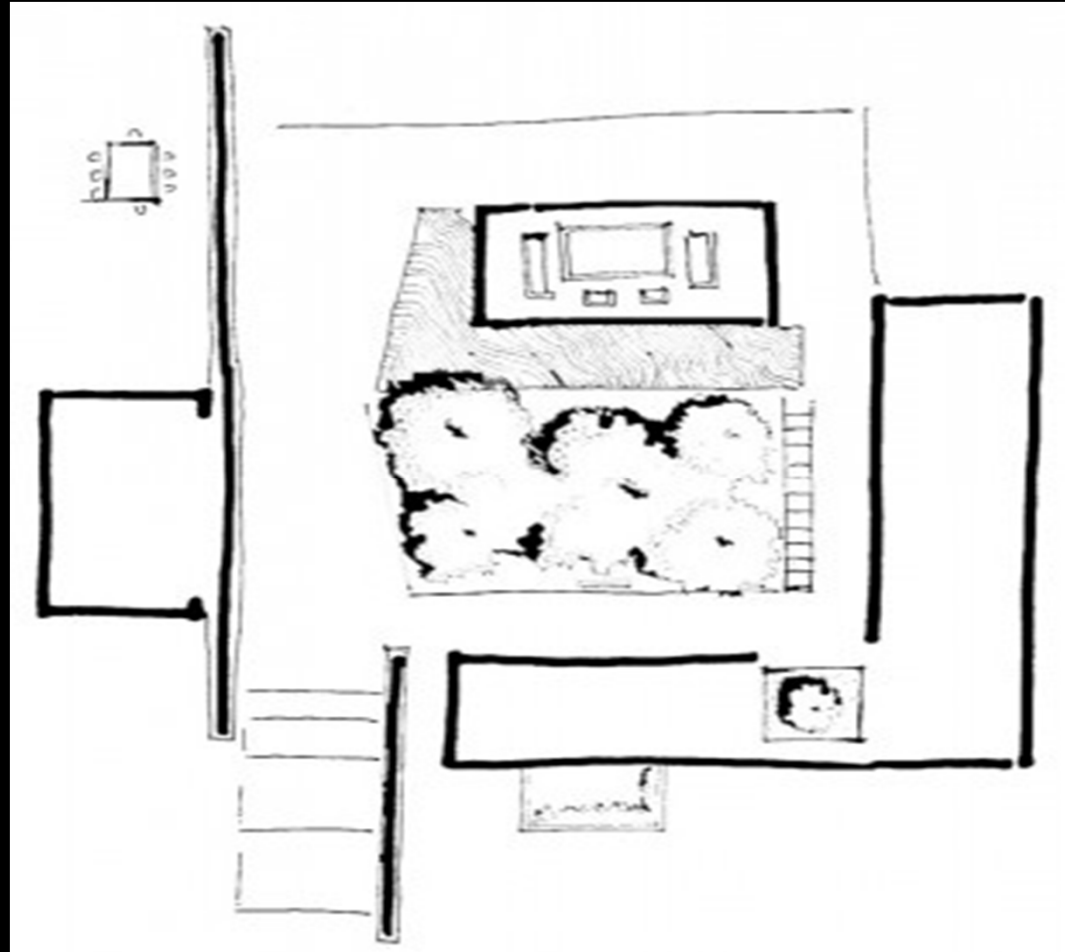


Living Room showcasing Minimalist design and populated with antique furniture.



HOUSE IN, PUNE

HOUSE IN PUNE



House in Pune -2010
Khadakvasla House,
Maharashtra, India.
Project area ... 820 Sgm

HOUSE IN PUNE



- The verandah, with its timber lattice, sets a backdrop that negotiates between the enclosures and the central courtyard. This transitional space of dappled shade promotes a lifestyle in close connection with the outdoors.
- The living room, a counterpoint in the house, is a tall glass box which will throb with the flickering of the fireplace on cold evenings and will frame the changing hues of the sky as the sun sets.

HOUSE IN PUNE



Main Entrance of the House, covered with a Teak Wood Pergola

HOUSE IN PUNE



Living Room constructed as a glass cube surrounded with a Water-body.

HOUSE IN PUNE



Living Room furnished with minimalist Modern furniture,



HOUSE IN LONAVALA

HOUSE IN LONAVALA



Courtyard & Verandah House – Lonavala, Maharashtra, India.

Status ...Completed

Project area ... 1400 Sqm

HOUSE IN LONAVALA



Rear view of the house where the stone wall enhances the earthy look of the region.



TWO BAY HOUSE , POYNAD , ALIBAUG

TWO BAY HOUSE , POYNAD , ALIBAUG



Main Entrance View , the overhang roof as an inviting element to the house,.



Weekend House, Maharashtra, India
Project Cost Approx ... 2.5 cr.

TWO BAY HOUSE , POYNAD , ALIBAUG



Rear view of the house opening up to a green pasture outside.



Stone wall as a solid façade catering to the contours of the site.

TWO BAY HOUSE , POYNAD , ALIBAUG



The semi-open space is covered with the over hang of the roof which opens up to the Internal Courtyards.

TWO BAY HOUSE , POYNAD , ALIBAUG



Two-Bays connected by a water body.



HOUSE AT BANDRA , MUMBAI

HOUSE AT BANDRA



House at Bandra Bandstand, Mumbai, India.
Status ...Completed
Project area ... 650 Sqm
Project Cost 1.5 cr.



Internal Staircase with indirect light pouring in.



Main Entrance of the House into the Living room

HOUSE AT BANDRA



Den on 1st floor

HOUSE AT BANDRA



Living room opening up onto the front Verandah



ABISAI HOUSE , ALIBAUG

ABISAI HOUSE , ALIBAUG



House at Agar Surya, Alibaug
Status ...Completed



Rear view of the house opening up to a green pasture outside.

ABISAI HOUSE , ALIBAUG



Two blocks connected by the pool

ABISAI HOUSE , ALIBAUG



Living room opening up to the pool and the rear lawn.



The bedrooms opening up to the pool.



Internal connecting corridor.

LEAF HOUSE , ALIBAUG

LEAF HOUSE , ALIBAUG



Architect : S.J.K. Architect
Project Cost Approx. ... 2.5 cr.
Status Completed

LEAF HOUSE , ALIBAUG



LEAF HOUSE , ALIBAUG



LEAF HOUSE , ALIBAUG



COOK OUT
The fully equipped kitchen has a mango wood table that Shaleen Parekh bought in Mumbai. It leads into the utilities area with a doorway that overlooks the lawns at the back of the house.



LEAF HOUSE , ALIBAUG



VIEWING ROOM
The sparsely furnished master bedroom, with a study table and bookshelves.

LEAF HOUSE , ALIBAUG



NATURAL ART

One of the guest bedrooms has a glass wall that frames the greenery outside.

(Opposite page, clockwise from top left)

DIVISIONAL QUARTERS

The master bedroom. The bath in the master bedroom is an open space with a glass wall letting in the greenery; kota stone has been used for the counter, the flooring and the other walls. The cluster of roofs formed by the den, the kitchen and the entrance, Parekh in the lounging area by the pool.

LEAF HOUSE , ALIBAUG



LEAF HOUSE , ALIBAUG



SPACE CRAFT
The lounge area by the pool, which is located at the entrance of the house and is adjacent to the foyer. The lawn at the other end is bordered by a lily pond.

LEAF HOUSE , ALIBAUG



VIEWING ROOM
The sparsely furnished master bedroom, with a study table and bookshelves.



SHAH HOUSE , LONAVALA

SHAH HOUSE , ALIBAUG



SHAH HOUSE , ALIBAUG





HOUSE OF FILM MAKER

HOUSE OF FILM MAKER



HOUSE OF FILM MAKER



HOUSE OF FILM MAKER



SHANTI HOUSE





KHOPOLI HOUSE

KHOPOLI HOUSE



KHOPOLI HOUSE



KHOPOLI HOUSE



KHOPOLI HOUSE



DRIFT HOUSE , MULSHI

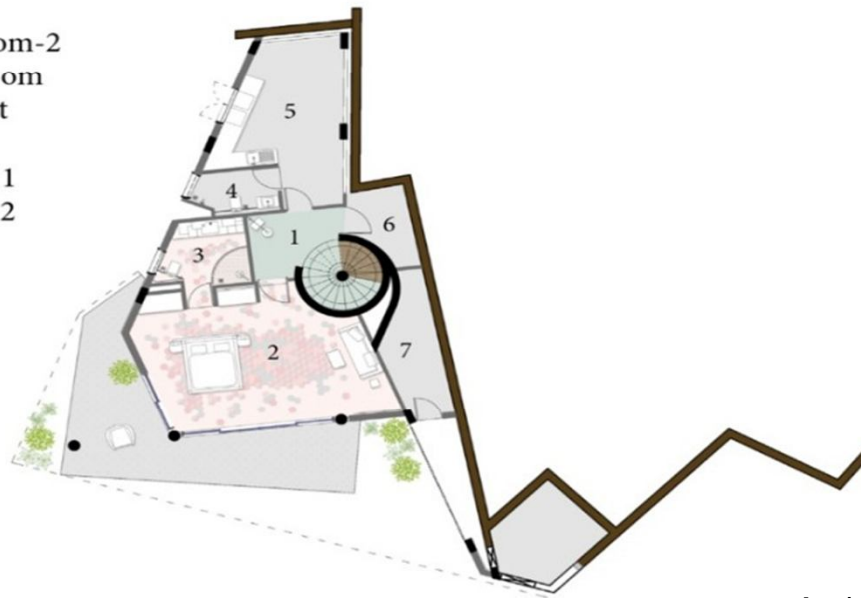
DRIFT HOUSE



DRIFT HOUSE ON THE LITTLE MUCH FARM
MULSHI, INDIA

LEGEND

1. Foyer
2. Guest Bedroom-2
3. Guest Bathroom
4. Powder Toilet
5. Staff Kitchen
6. Store Room- 1
7. Store room - 2



LOWER GROUND FLOOR PLAN

Architect : Lab Architect
Client : Mr. Raoul Bajaj
Project Cost Approx. - 4.00cr.
Status Completed

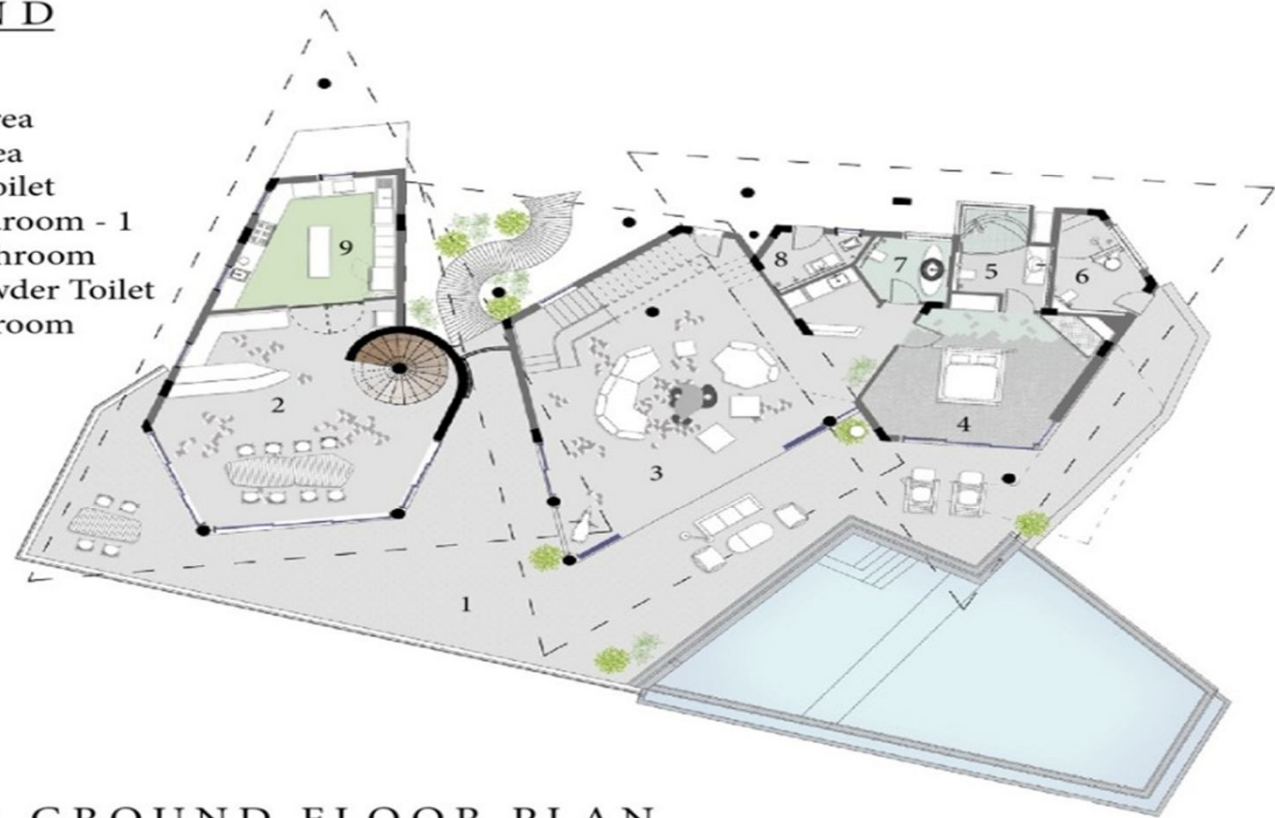
DRIFT HOUSE



DRIFT HOUSE ON THE LITTLE MUCH FARM
MULSHI, INDIA

LEGEND

1. Deck
2. Dining Area
3. Living Area
4. Powder Toilet
5. Guest Bedroom - 1
6. Guest Bathroom
7. Pool - Powder Toilet
8. Staff Bathroom
9. Kitchen



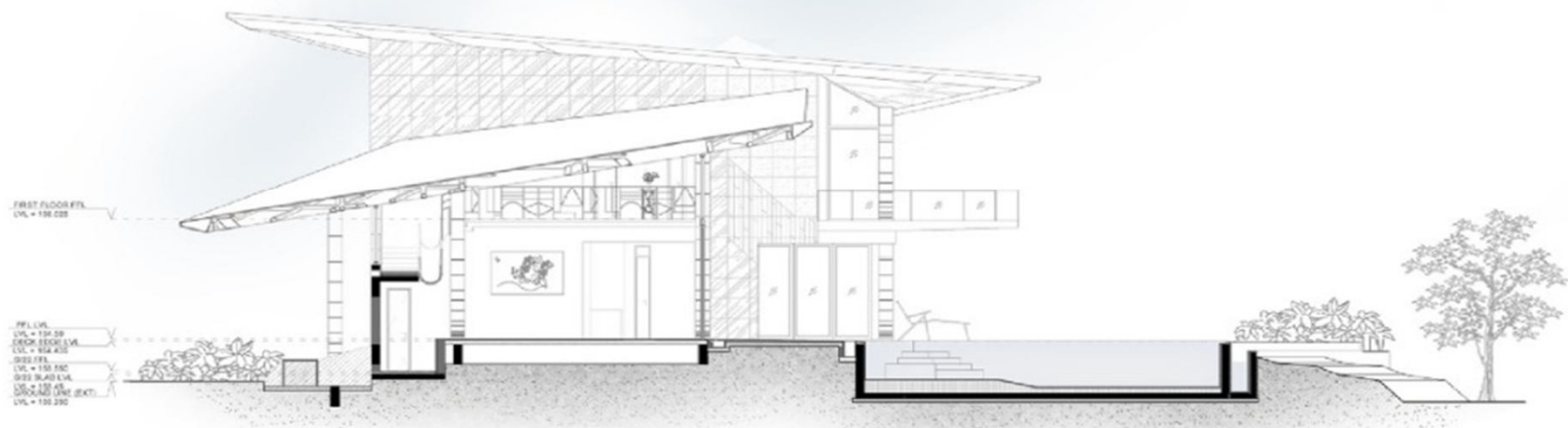
UPPER GROUND FLOOR PLAN

DRIFT HOUSE



DRIFT HOUSE ON THE LITTLE MUCH FARM

MULSHI, INDIA



FIRST FLOOR FTL
LVL = 100.000

FFL LVL
LVL = 100.000
SECOND FLOOR LVL
LVL = 100.400
ROOF FTL
LVL = 100.100
SECOND SLAB LVL
LVL = 100.100
THIRD SLAB LVL
LVL = 100.200

SECTION AA'

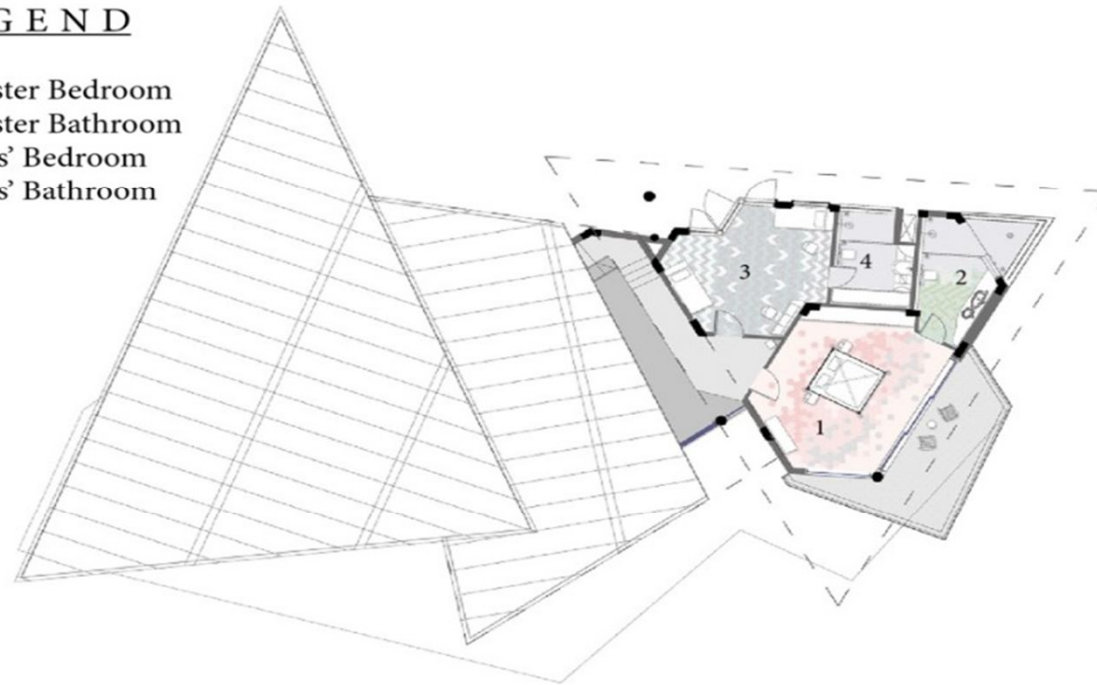
DRIFT HOUSE



DRIFT HOUSE ON THE LITTLE MUCH FARM
MULSHI, INDIA

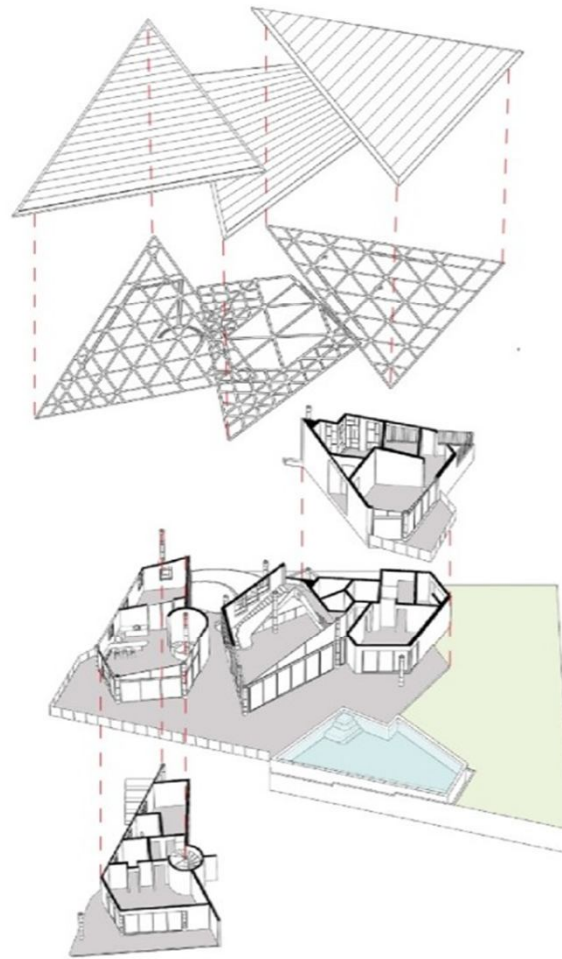
LEGEND

- 1. Master Bedroom
- 2. Master Bathroom
- 3. Kids' Bedroom
- 4. Kids' Bathroom



FIRST FLOOR PLAN

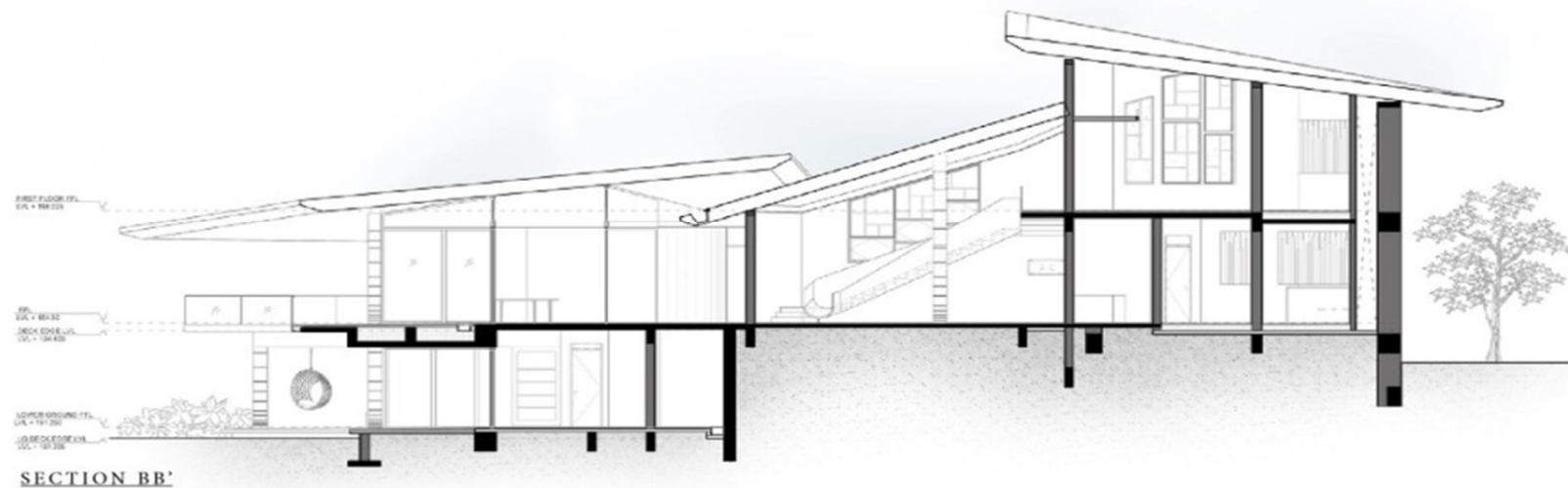
DRIFT HOUSE



DRIFT HOUSE



DRIFT HOUSE ON THE LITTLE MUCH FARM
MULSHI, INDIA



DRIFT HOUSE



DRIFT HOUSE



DRIFT HOUSE



DRIFT HOUSE



DRIFT HOUSE



DRIFT HOUSE



DRIFT HOUSE



DRIFT HOUSE



DRIFT HOUSE



DRIFT HOUSE



DRIFT HOUSE



DRIFT HOUSE



DRIFT HOUSE



DRIFT HOUSE



DRIFT HOUSE



DRIFT HOUSE



Our Works under Execution



Manori House



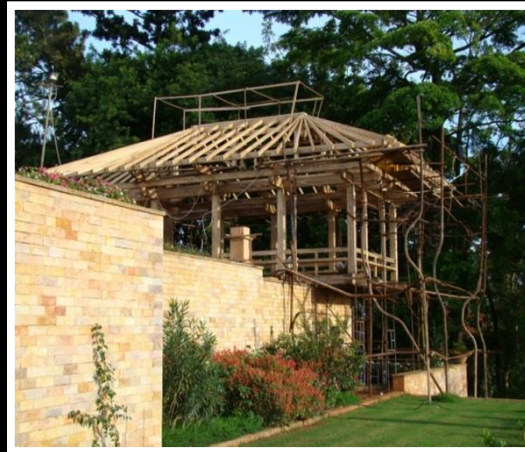
Hemdev House



Chittra House



Banu Villa Alibaug



Wood Pavilion in Africa



House With Selective Vision House

MANORI HOUSE





HEMDEV HOUSE ,ALIBAUG

HEMDEV HOUSE , ALIBAUG



Weekend House
Thal, Alibaug
Maharashtra, India
Approx Cost - 2.5 cr.
Status-Under progress



Overview of the house.

HEMDEV HOUSE , ALIBAUG



HEMDEV HOUSE , ALIBAUG



HEMDEV HOUSE , ALIBAUG



HEMDEV HOUSE , ALIBAUG



HEMDEV HOUSE , ALIBAUG



HEMDEV HOUSE , ALIBAUG



Internal Courtyard looking into the living room



Internal connecting corridor

HEMDEV HOUSE , ALIBAUG



All rooms opening up into the External Verandah



French Windows in Natural Teak Wood.

CHITRA AWAS, ALIBAUG

CHITRA AWAS , ALIBAUG



CHITRA AWAS , ALIBAUG



CHITRA AWAS , ALIBAUG





UGANDA LUGAZI WOOD PAVILION , AFRICA

UGANDA LUGAZI WOOD PAVILION, AFRICA



UGANDA LUGAZI WOOD PAVILIAN, AFRICA



UGANDA LUGAZI WOOD PAVILIAN, AFRICA



UGANDA LUGAZI WOOD PAVILIAN, AFRICA



UGANDA LUGAZI WOOD PAVILIAN, AFRICA



UGANDA LUGAZI WOOD PAVILIAN, AFRICA



UGANDA LUGAZI WOOD PAVILIAN, AFRICA





SALMAN VAKIL , LONAVALA

SALMAN VAKIL , LONAVALA



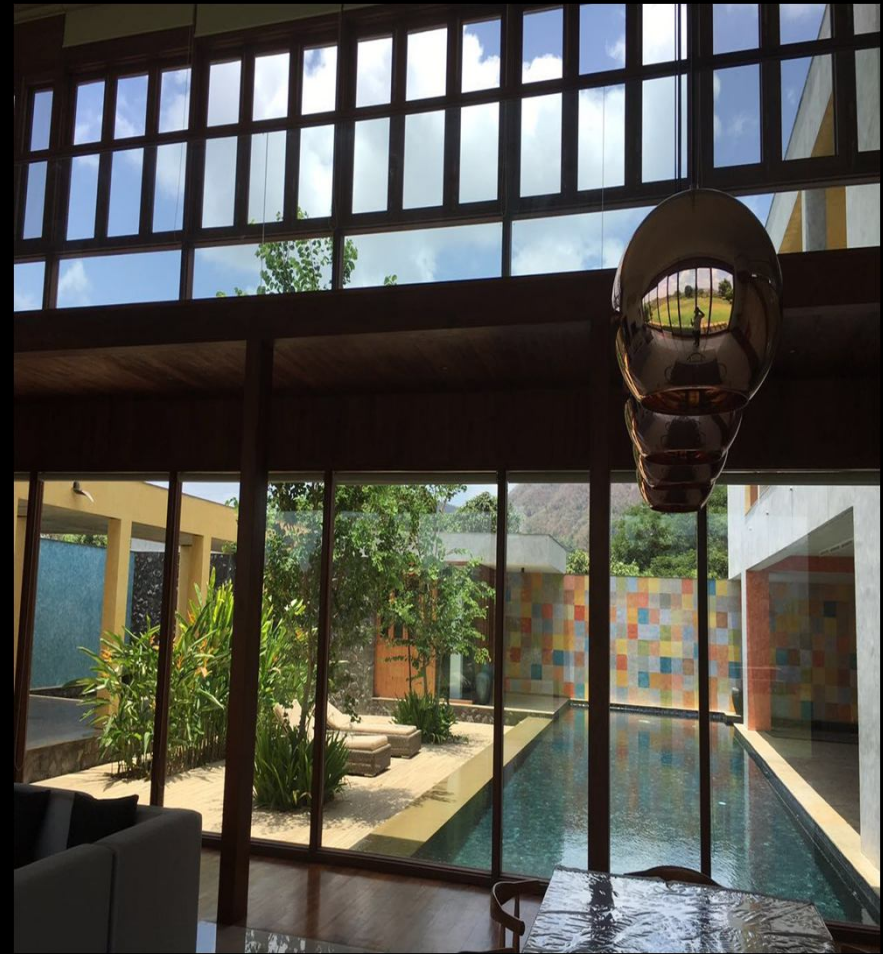


BANU VILLA, ALIBAUG

BANU VILLA, ALIBAUG



BANU VILLA, ALIBAUG



BANU VILLA, ALIBAUG



BANU VILLA, ALIBAUG



BANU VILLA, ALIBAUG



BANU VILLA, ALIBAUG



BANU VILLA, ALIBAUG



BANU VILLA, ALIBAUG





HOUSE WITH SELECTIVE VISION

AMBHEY VALLEY

HOUSE WITH SELECTIVE VISION



HOUSE WITH SELECTIVE VISION



HOUSE WITH SELECTIVE VISION



HOUSE WITH SELECTIVE VISION



HOUSE WITH SELECTIVE VISION



HOUSE WITH SELECTIVE VISION



THANK YOU



IMPEX ENGINEERS PVT. LTD.

153/154, Mazgaon Mansion,
Dr. Mascarenhas Road,
Mazgaon,
Mumbai - 400 010
India.
Web : impexengineers.com
Email : mail@impexengineers.com
Contact : +91 22 23735589